



Installer "Microsoft SQL Server 2005 Express Edition SP2" avec "Microsoft ISA Server 2005"

Introduction

TESTED ON :
AUTHORS :
SOFTWARE REQUIRED :
CHANGES HISTORY :

Simple-Tech.info   End-User License Agreement  

LICENSE AGREEMENT
WARRANTY
LICENSING AND DISTRIBUTION
CONFIDENTIAL PROPERTY
TRADEMARKS
IMPORTANT
CONTACTS

D  sinstallation de   Microsoft Desktop Engine MSDE 2000  

Installer    Microsoft SQL Server Management Studio Express 2005   

Contr  le du fonctionnement de    Microsoft SQL Server Management Studio Express 2005   

MESSAGE POSSIBLE EN CAS DE NON D  MARRAGE DU SERVICE    MICROSOFT FIREWALL   
CORRIGER LE PROBL  ME DE NON D  MARRAGE DU SERVICE
LE SERVICE ISA NE D  MARRE PAS ET VOUS AVEZ LE MESSAGE D  ERREUR SUIVANT DANS L  EVENTLOG

Introduction

Tested on :

Windows 2003 R2 SP2
ISA Server 2006

Authors :

@Cereal

Software Required :

Windows 2003 Server SP2 (R2)
ISA Server 2000
ISA Server 2006
Microsoft SQL Express 2005 Edition SP2
Microsoft SQL Server Management Studio Express 2005

Changes History :

Version 1.1.0

Migration vers ISA Server 2006 et Microsoft SQL Express 2005 Edition SP2

Version 1.0.0

First version.

Simple-Tech.info "End-User License Agreement"

Copyright © 2005-2008 by Simple-Tech.info.
All rights reserved.

LICENSE AGREEMENT

YOUR USE OF THE SOFTWARES FROM SYMPLE-TECH.INFO INDICATES YOUR ACCEPTANCE OF THIS LICENSE AGREEMENT AND WARRANTY.

WARRANTY

In no event the author shall be liable for any damages whatsoever including direct, indirect, incidental, consequential, loss of business profits or special damages, even if the author have been advised of the possibility of such damages.

This includes, but is not limited to, merchantability and fitness for a particular function. The entire risk related to the software performance or quality is assumed by the user.

LICENSING AND DISTRIBUTION

All software's from Simple-Tech.info are free software. You can use it without charge.

You may copy this software as you wish, and give exact copies of the original version to anyone, and distribute it via electronic means provided that:

1. The product is not modified in any way.
2. You maintain the copyright notice on all copies.
3. You should not charge or request donations for any such copies.
4. You should not distribute with other products without the author's permission.

CONFIDENTIAL PROPERTY

All softwares, scripts and documents are confidential property of the author and Symple-Tech.info.

Reverse engineering (decompiling) or disassembling is strictly prohibited.

Changing the distribution form (archive) or any other part of the software in any way is strictly prohibited.

TRADEMARKS

All brand names and product names used are trademarks or trade names of their respective holders.

All references, logos, images, names, products, software and hardware are or may be copyrights or trademarks of their respective companies.

No infringement is intended.

IMPORTANT

If you do not agree with the terms of this license you have to remove the software from your storage devices and do not use the software.

CONTACTS

<http://www.simple-tech.info>

D'installation de "Microsoft Desktop Engine MSDE 2000"



Il n'y a pas besoin de sauvegarder ou de détacher les bases de données de ISA Server 2005 car elles sont créées automatiquement au démarrage du service Microsoft Firewall

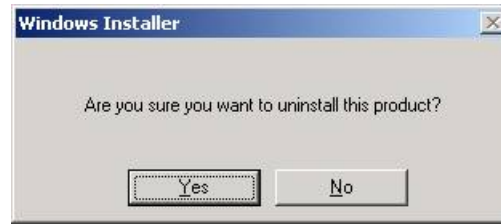
1. Arrêtez les services :
 - « Microsoft Firewall »
 - « Microsoft ISA Server Control »
 - « Microsoft ISA Server Job Scheduler »
 - « Microsoft ISA Server Storage »
 - « MSSQL\$MSFW »



D'installation de MSDE 2000 de Microsoft ISA Server

<http://support.microsoft.com/kb/317619>

2. Aller dans le sous répertoire MSDE du répertoire d'installation de Microsoft ISA Server
3. Exécuter la commande ci-dessous :
 - « ISAMSDE>setup.exe /x setup\sqlrun01.msi INSTANCENAME="MSFW" /L*v C:\MSDE_Uninstall.log »
4. Acceptez la d'installation.



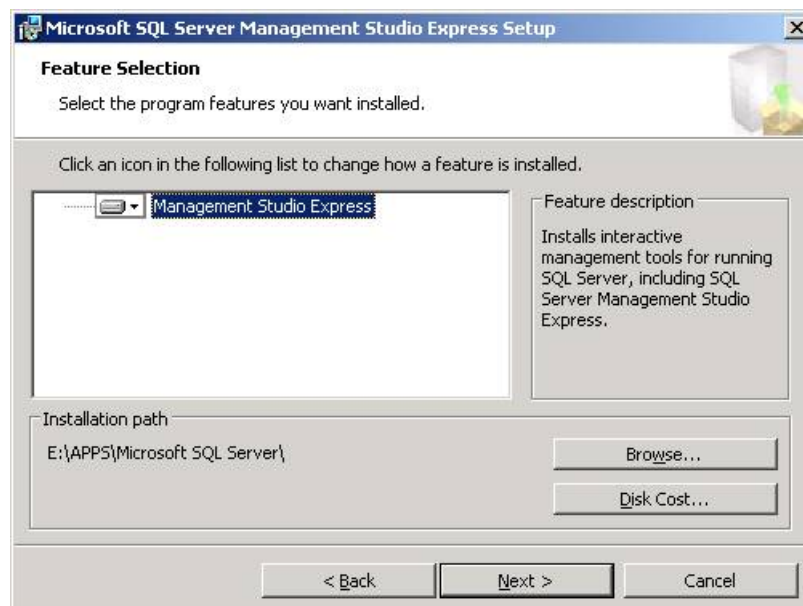
- 5. Effacer le répertoire :
 « C:\Program Files\Microsoft SQL Server »

Installer « Microsoft SQL Server Management Studio Express 2005 »

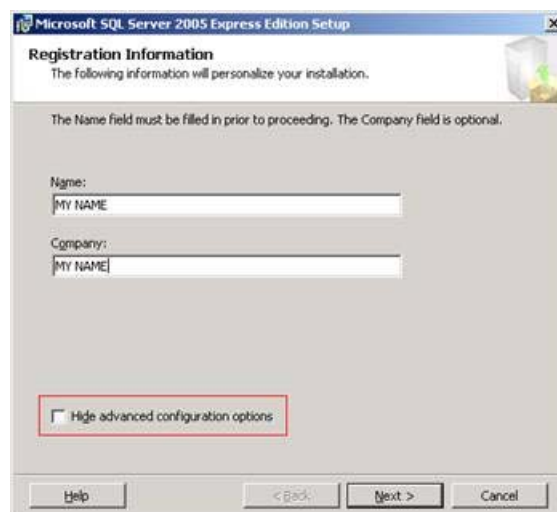
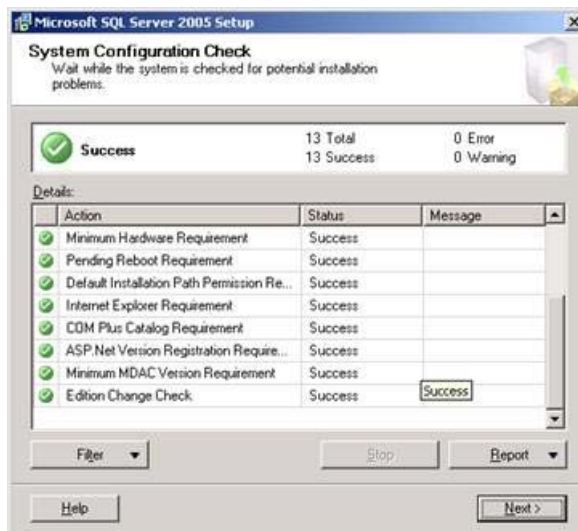
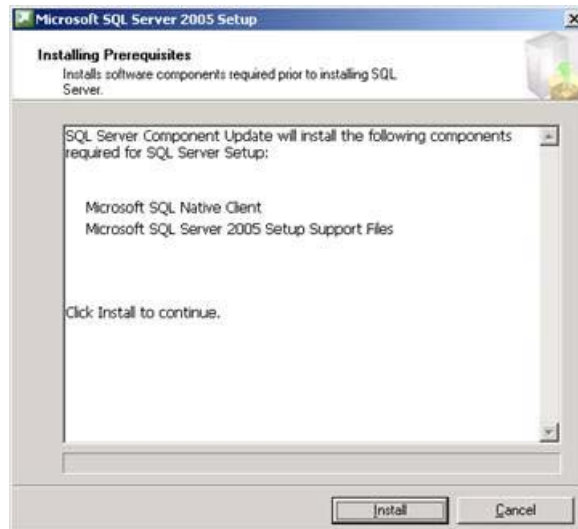
- 1. Installer « Microsoft Core XML Services (MSXML) 6.0 »



- 2. Installer « Microsoft SQL Server Management Studio Express 2005 ».
- 3. Saisissez les informations suivantes dans les boîtes de dialogues.

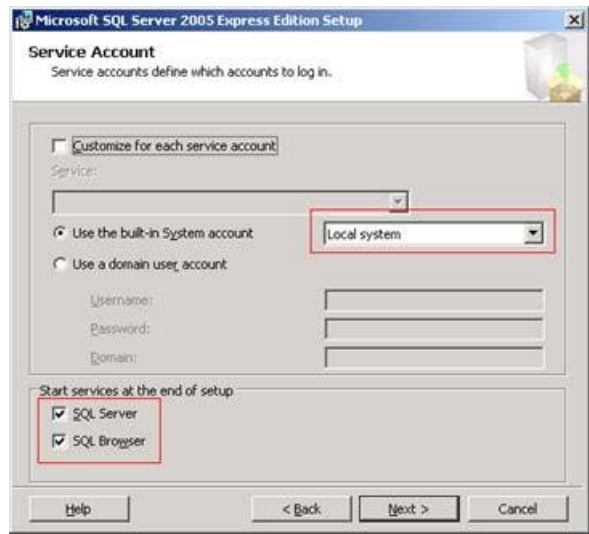


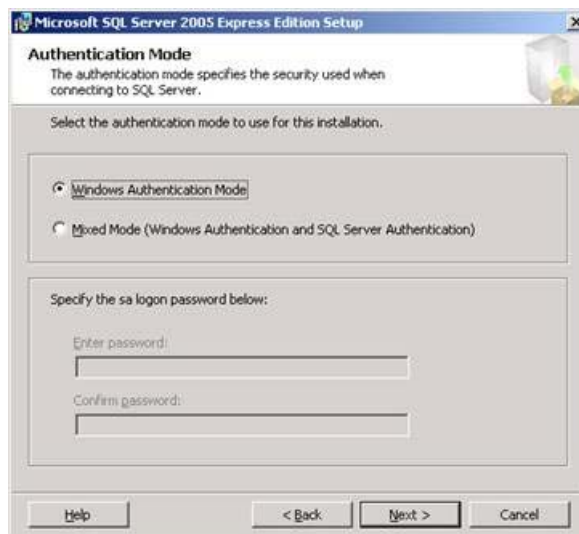
- 4. Installer Microsoft SQL Server 2005 Express Edition SP2

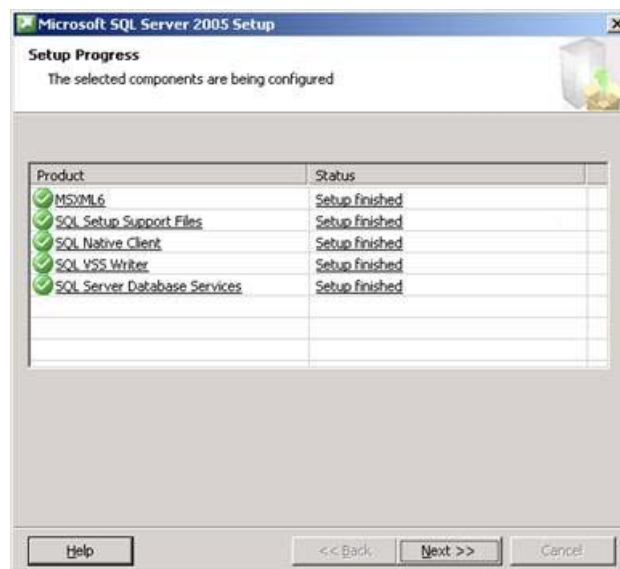
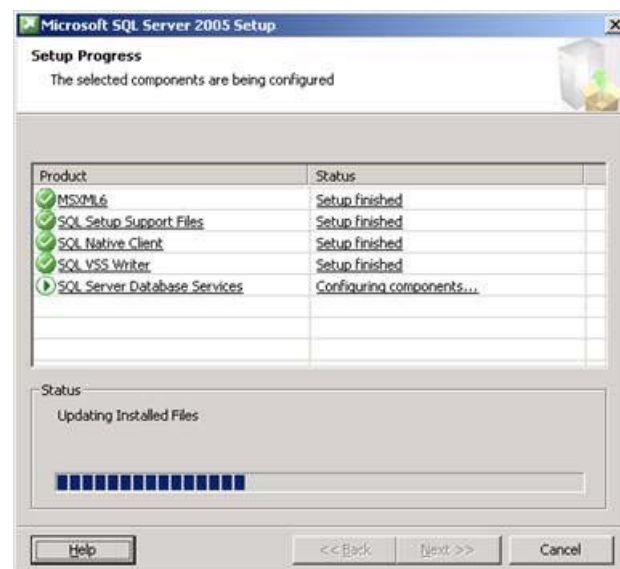
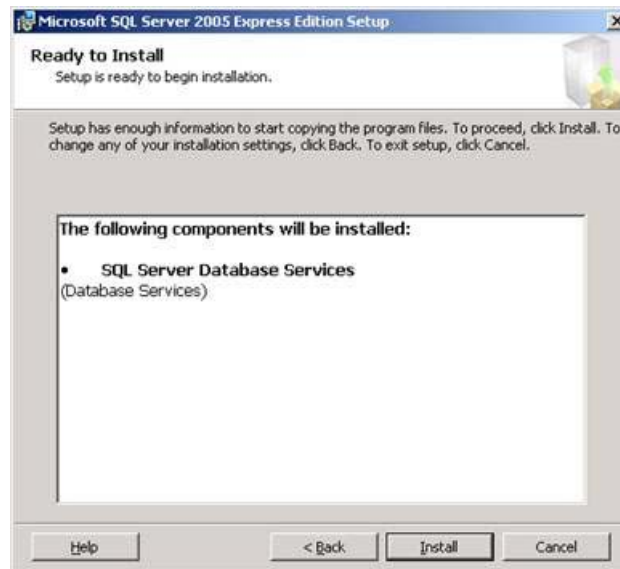




Nommez l'instance SQL : MSFW







5. DÃ©marrer le service Microsoft Firewall.

ContrÃ´le du fonctionnement de « Microsoft SQL Server Management Studio Express 2005 »

Si le service vous renvoie l'erreur « Windows could not start Microsoft Firewall on local computer..... » allez dans le gestionnaire d'événements et voyez si vous avez l'événement ID : 21192

Message possible en cas de non démarrage du service « Microsoft Firewall »

Event Type: Error
 Event Source: Microsoft Firewall
 Event Category: Log
 Event ID: 21192
 Date: 6/28/2007
 Time: 8:19:29 PM
 User: N/A
 Computer:
 Description:
 The Microsoft Data Engine (MSSQL\$MSFW) service could not connect to the MSDE database for Microsoft Firewall logging because the database file could not be created or opened, there are insufficient resources, or the Microsoft Data Engine service is not started. Microsoft Data Engine service error description: **CREATE DATABASE permission denied in database 'master'**

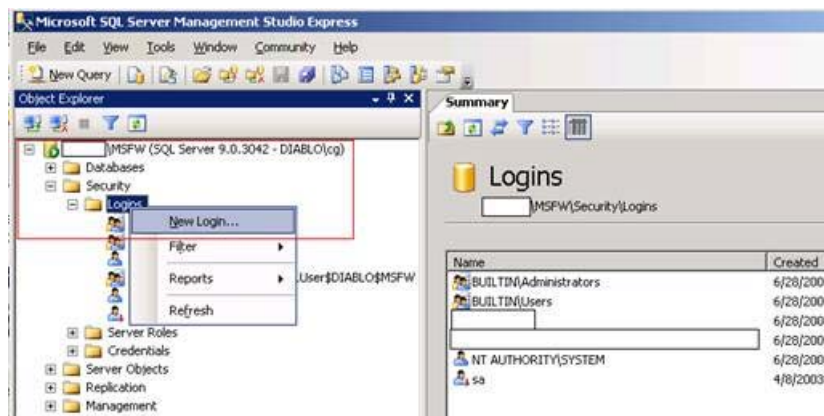


Corriger le problème de non démarrage du service

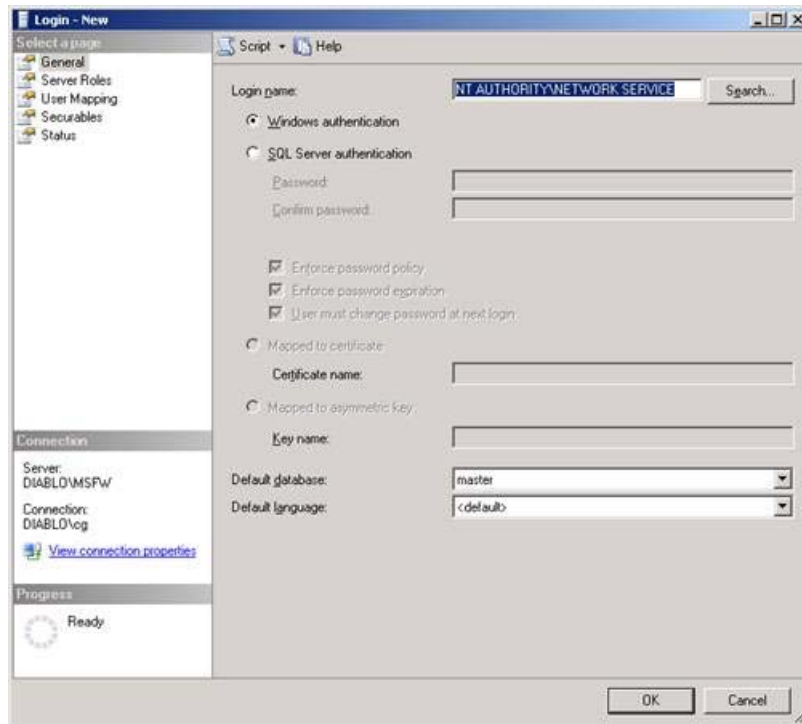
1. Exécutez le "SQL Server Management Studio Express".
2. Connectez l'instance "SERVEUR\MSFW".



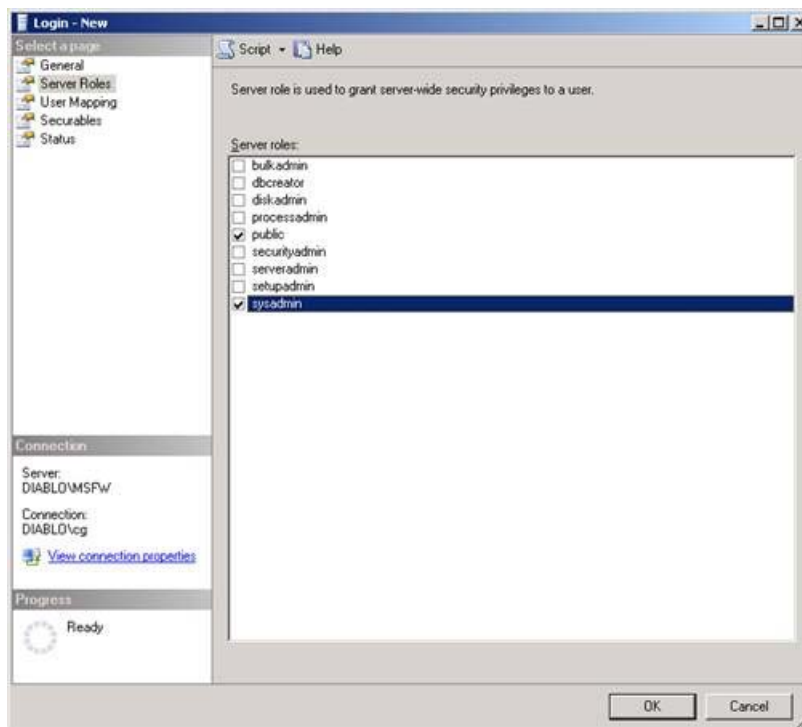
3. Allez dans l'onglet « Security\Logins » et créer un nouvel utilisateur (comme ci-dessous).



4. Comme nom d'utilisateur ajoutez "NT AUTHORITY\NETWORK SERVICE".



5. Allez dans l'onglet « Server Roles » et ajoutez le droit « sysadmin ».



- 6. D marrez les services :
 - Microsoft Firewall
 - Microsoft ISA Server Control
 - Microsoft ISA Server Job Scheduler
 - Microsoft ISA Server Storage

Le service ISA ne d marre pas et vous avez le message d'erreur suivant dans l eventlog

```

Event Type: Error
Event Source: Microsoft Firewall
Event Category: None
Event ID: 11002
Date: 10.04.2008
Time: 16:11:51
User: N/A
Computer: [SERVER]
    
```

Description:

Microsoft Firewall failed to start. The failure occurred during creation of logging module because the configuration property msFPCLogFileDirectory of key SOFTWARE\Microsoft\Fpc\Storage\EffecTree1\Array-Root\Arrays\{BB1082CA-2827-45E1-ABC6-CB5ED58DA3A2}\Logs\Proxy-WSP is not valid. Use the source location 5.875.5.0.5720.100 to report the failure. The error description is: **Access is denied.**

1. Il manque les permissions pour le compte « NETWORK SERVICE » sur le répertoire des bases de données SQL Server.
2. Affectez les permissions suivantes sur le répertoire :



3. Affectez également les permissions suivantes sur tous les répertoires parents jusqu'à la racine du disque :

Exemple :

« E:\ » Permissions « NETWORK SERVICE » « List Folder Contents »

