



The Windows 2003 server migrated from physical to virtual use huge amount of CPU

Introduction

TESTED ON :

DEVELOPERS :

AUTHORS :

SOFTWARE REQUIRED :

CHANGES HISTORY :

Simple-Tech.info "End-User License Agreement"

LICENSE AGREEMENT

WARRANTY

LICENSING AND DISTRIBUTION

CONFIDENTIAL PROPERTY

TRADEMARKS

IMPORTANT

CONTACTS

Introduction

Tested on :

ESX Server 3

Windows 2003 Server

Windows 2000 Server

Authors :

Cereal

Changes History :

Version 1.0

First version.

Simple-Tech.info "End-User License Agreement"

Copyright © 2005-2006 by Simple-Tech.info.

All rights reserved.

LICENSE AGREEMENT

YOUR USE OF THE SOFTWARES FROM SYMPLE-TECH.INFO INDICATES YOUR ACCEPTANCE OF THIS LICENSE AGREEMENT AND WARRANTY.

WARRANTY

In no event the author shall be liable for any damages whatsoever including direct, indirect, incidental, consequential, loss of business profits or special damages, even if the author have been advised of the possibility of such damages.

This includes, but is not limited to, merchantability and fitness for a particular function. The entire risk related to the software performance or quality is assumed by the user.

LICENSING AND DISTRIBUTION

All software's from Simple-Tech.info are free software. You can use it without charge.

You may copy this software as you wish, and give exact copies of the original version to anyone, and distribute it via electronic means provided that:

1. The product is not modified in any way.
2. You maintain the copyright notice on all copies.
3. You should not charge or request donations for any such copies.
4. You should not distribute with other products without the author's permission.

CONFIDENTIAL PROPERTY

All softwares, scripts and documents are confidential property of the author and Simple-Tech.info.

Reverse engineering (decompiling) or disassembling is strictly prohibited.

Changing the distribution form (archive) or any other part of the software in any way is strictly prohibited.

TRADEMARKS

All brand names and product names used are trademarks or trade names of their respective holders.

All references, logos, images, names, products, software and hardware are or may be copyrights or trademarks of their respective companies.

No infringement is intended.

IMPORTANT

If you do not agree with the terms of this license you have to remove the software from your storage devices and do not use the software.

CONTACTS

<http://www.simple-tech.info>

Introduction

The "Virtual Infrastructure" alerts you that you have a Virtual Machine that use huge mount of CPU but when you see in the Virtual Machine console the CPU use is normal.

How diagnose the source of the CPU problem

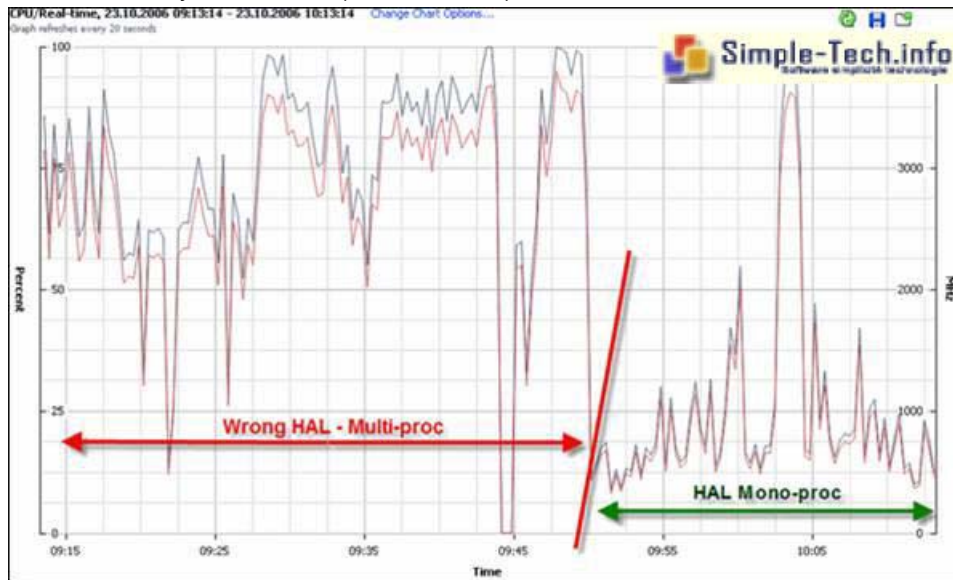
If your hardware is uniprocessor and the HAL in the "Computer Management" console is multiprocessor, when you open the "Process Explorer" tool on the "Interrupts" process the system use permanently CPU (4.69%).

Solution

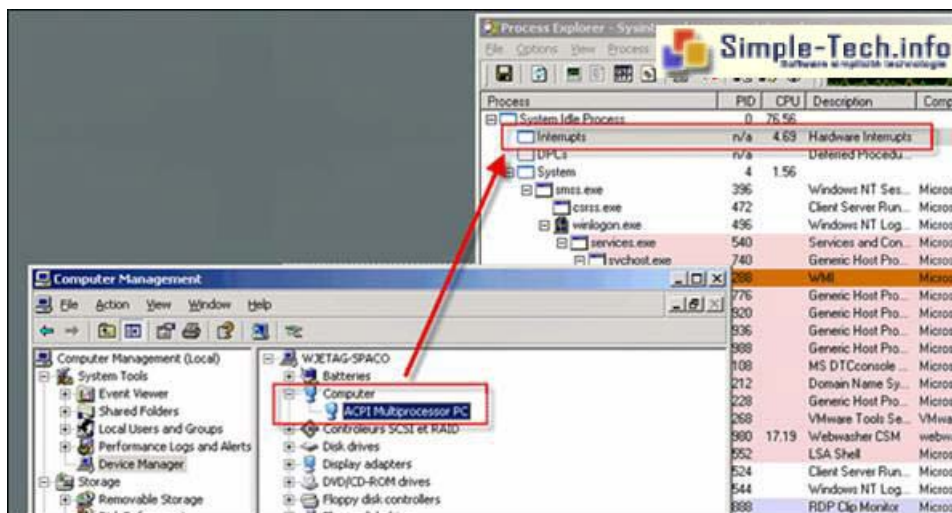
1. Read the article ["Proc@dure expliquant comment ajouter ou supprimer un ou des processeurs dans une VMachinè"](#)
2. Download the batch file.
3. Run the batch file in your system.
4. Reboot.

Conclusion

In the virtual infrastructure you see that (before / after)



In the Virtual Machine you see before



In the Virtual Machine you see after

